

# GIANT

Team TOBROCO

Industrielaan 2, 5061 KC Oisterwijk

Tel.: +31 (0)13-5211212

Fax: +31 (0)13-5234045

Internet: [www.tobroco.com](http://www.tobroco.com)

E-Mail: [info@tobroco.com](mailto:info@tobroco.com)



## TENDO

A compact, multifunction jack of all trades



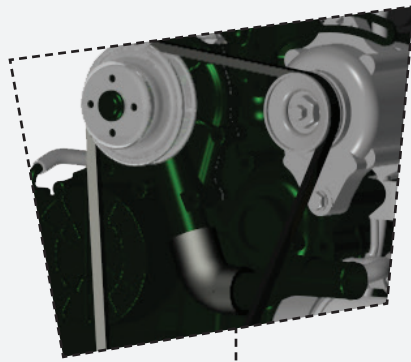
3648 TENDO - 4548 TENDO HD

## VERSATILE AND COMPACT

Our wide range includes several unique GIANTS, including 2 TENDO machines. The TENDO is very compact and built to maneuver in small spaces and on rough terrain. Want to experience the feeling of a GIANT yourself? Please contact a GIANT dealer in your area.

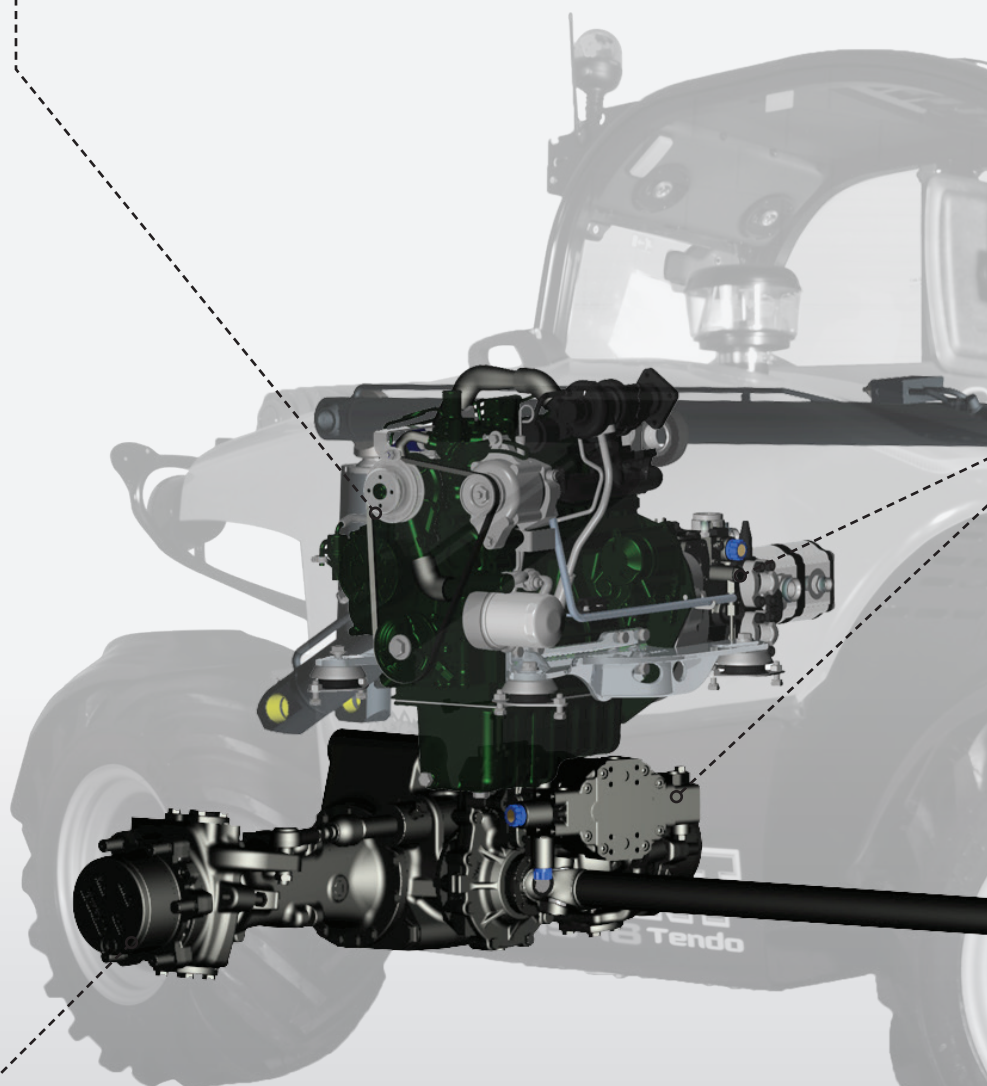






**KUBOTA MOTOR**

Excellent quality that guarantees durability and one of the quietest in its class.

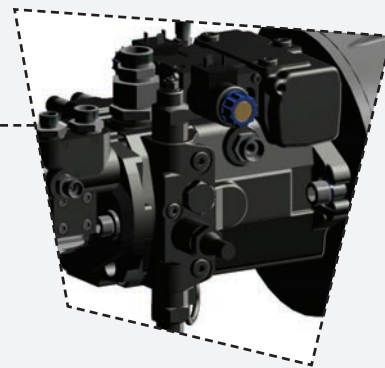


**CARRARO**

Steady, compact and reliable axles from a reputable brand.

## QUALITY IS ON THE INSIDE

The core of the TENDO consists of high quality components from top brands such as Kubota, Bosch Rexroth and Carraro. Through intensive collaboration with these parties optimal advances performance are 'extracted' from each part.



BOSCH REXROTH  
Hydraulic pump and  
-motor ensure efficiency,  
power and comfort.

### SMART COMMUNICATION SYSTEM

Because the TENDO is equipped with a smart communication system, diagnosing and repairing faults is much easier. In addition, this provides the capability for additional options.



# SPACIOUS & COMPACT

The spacious cab with curved windscreen provides a good field of view. You have 360 degree vision. For even better visibility choose the optional extra exterior mirror.



Broad operational view

Broad operational view

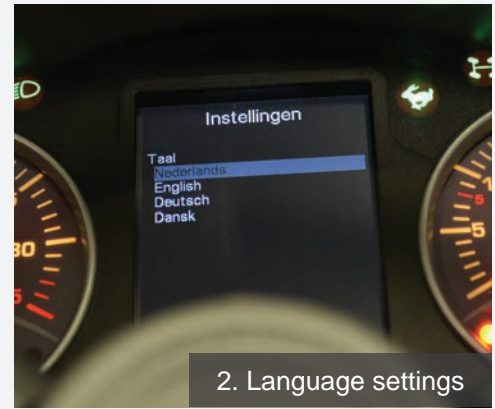


*The TENDO is extremely compact. It is narrower and less than two meters high. As a result, it manoeuvres easily in all kinds of areas.*





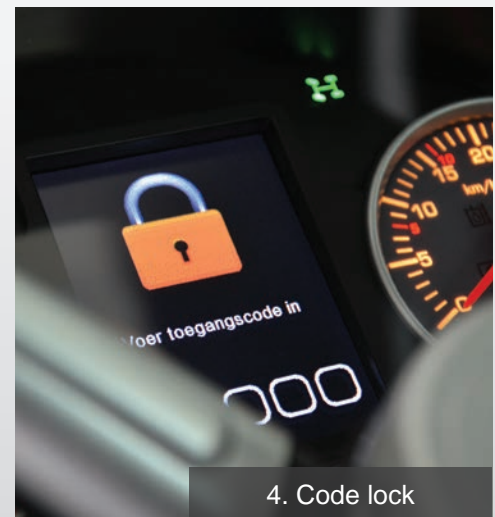
1. Spacious cabin



2. Language settings



3. Dashboard



4. Code lock



5. Touchpad



Discover the optional  
proportional joystick on our  
website. Visit:  
[www.tobroco.com](http://www.tobroco.com)

#### MANY CONVENIENCES

1. Spacious cab with good visibility
2. Choice of multiple languages.
3. A clear and elegant dashboard.
4. Secure TENDO with a code lock. (Option)
5. The main functions with one button press.

# A WIDE RANGE

TOBROCO Machines offers a wide range of unique wheel loaders. Flexible, powerful and adjusted as desired for small and large operations.



	3648 TENDO	4548 TENDO HD
<b>Engine</b>	4 cylinder Kubota 36 HP / 26 kW	4 cylinder Kubota 45 HP / 33 kW
<b>Service weight</b>	2950 kg	2950 kg
<b>Drive hydraulics</b>	Hydrostatic automotive	Hydrostatic automotive <b>HD</b> (Heavy Duty)
<b>Driving speed</b>	0-10 km/h / 0-25 km/h	0-10 km/h / 0-25 km/h
<b>Drive</b>	Planetary axles	Planetary axles <b>HD</b> (Heavy Duty)
<b>Differential lock</b>	Electrically controlled (option)	Electrically controlled (option)
<b>Standard tyres</b>	10.0/75-15.3 AS (160 cm machine) width)	10.0/75-15.3 AS (160 cm machine) width)
<b>Service brake</b>	Hydraulically operated disk brake	Hydraulically operated disk brake
<b>Parking brake</b>	Disk brake	Disk brake
<b>Quick change</b>	GIANT Standard Hydraulic	GIANT Standard Hydraulic
<b>Drive hydraulics</b>	84 L/min (350 bar)	84 L/min (450 bar)
<b>Working hydraulics</b>	51 L/min (230 bar)	51 L/min (230 bar)
<b>Lifting capacity</b>	1400 kg	1400 kg

**TOBROCO MACHINES DE KNIKLADER SPECIALIST!**

Mis geen GIANT nieuws meer! Klik op onderstaand nieuwsbrief icoon om je in te schrijven voor de GIANT nieuwsbrief.

**NIEUWSBRIEF**

Welkom op de website van Tobroco Machines. Tobroco is de fabrikant van de Giant knikladers, Tobroco bemesters en Tobroco oprijwagens. De hoofdactiviteit van ons bedrijf zijn de Giant knikladers.

Deze worden door ons ontworpen en gebouwd in onze fabrieken in Oisterwijk. Met een team 105 enthousiaste medewerkers bouwen we momenteel zo'n 1500 knikladers

GIANT TOBROCO

Giant wheel loader

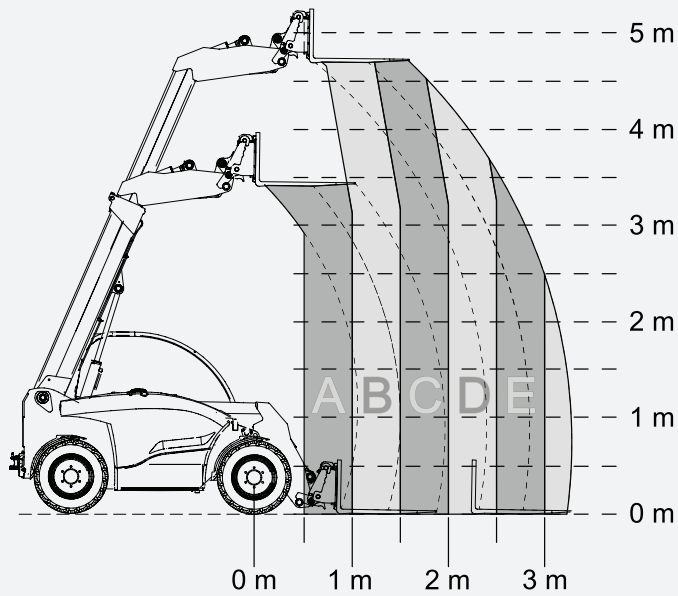
0:00 / 8:38

For more information, please refer to [www.tobroco.com](http://www.tobroco.com)  
 Don't miss out on all the latest news. Subscribe for the newsletter.

Data subject to change.



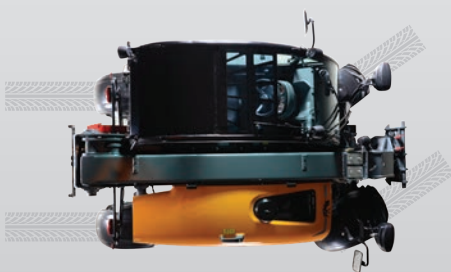
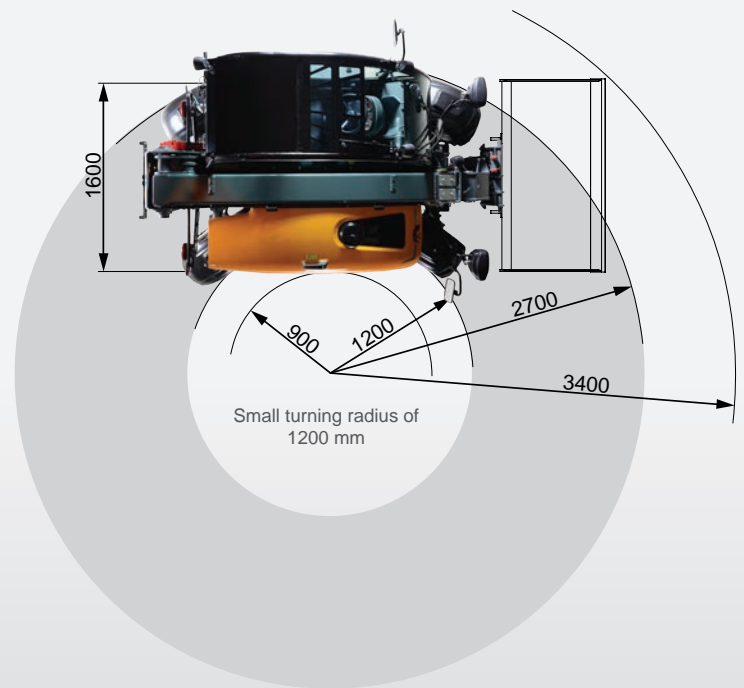
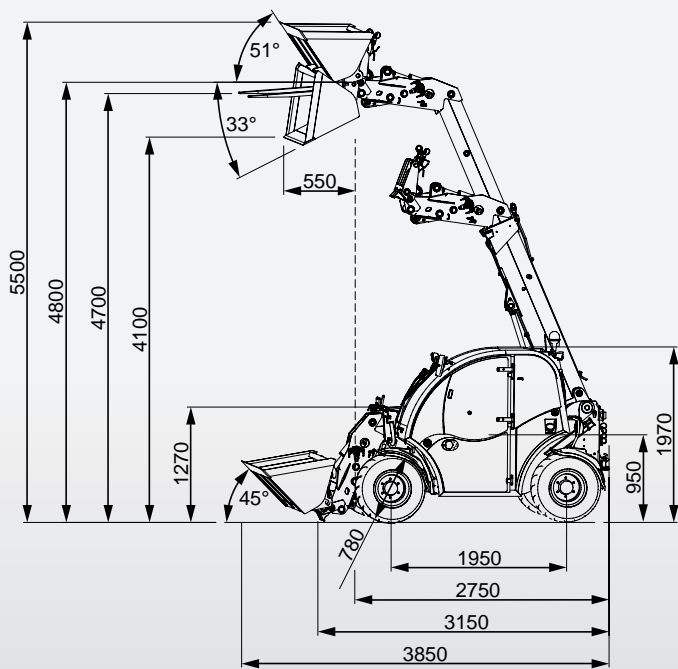
# TECHNICAL DATA



## TIPPING LOADS

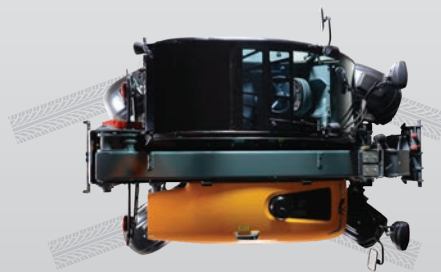
Standard version	A	B	C	D	E
Tipping load (kg)	2.490	1.670	1.255	700	585
Lifting capacity (kg)	1.735	1.165	900	395	330

With counter weight (Option)	A	B	C	D	E
Tipping load (kg)	2.870	1.925	1.445	855	710
Lifting capacity (kg)	2.115	1.420	1.090	550	460



### Two-wheel steering

Makes it possible to drive steady and steer accurately.



### Four-wheel steering

Very maneuverable in smaller areas due to the small turning radius.



### Crab steer

Easy to drive closely to the wall.

Data subject to change.

# COMPLETE

Optimally composed for your convenience. Every detail counts: comfort, safety and ease of use are the core values of the GIANT machines.



## DRIVING COMFORT

Choice of tires for various types of terrain. Consult your dealer which tire is best suited for your working situation.

31x15.5-15 AS  
(80 x 37 cm)



31x15.5-15 SKID  
(80 x 40 cm)



31x15.5-15 TR-06  
(80 x 40 cm)



425/40B17 GSP  
(80 x 43 cm)

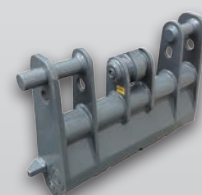


10.0/75-15.3 AS  
(76 x 26 cm)



## ATTACHMENT BRACKET

Thanks to the GIANT's attachment bracket, you can easily and quickly swap your attachments. Caution! In order to offer you even better customer service, we also offer multiple attachments. Ask your dealer for the GIANT conditions.



GIANT STANDARD  
(HYDRAULIC)

# SERVICE & MAINTENANCE

The TENDO is a machine that is easy to maintain properly. Under the bonnet you will find a very compact engine compartment where everything is easy to reach.



The engine compartment of the TENDO models are very accessible for daily checks of the oil, coolant and air filter.

**OPTION: Even more functionality with a three-point hitch behind the machine!**

# MULTIFUNCTIONAL

GIANT offers hundreds of attachments, which allows the use of the TENDO for many more applications than you would think at first.



Three-point lifting mechanism



[WWW.GIANT-ATTACHMENTS.COM](http://WWW.GIANT-ATTACHMENTS.COM)



## TOBROCO

Industrielaan 2

5061 KC Oisterwijk (Niederlande)

Tel.: +31 (0)13-5211212

Fax: +31 (0)13-5234045

Internet: [www.tobroco.com](http://www.tobroco.com)

E-Mail: [info@tobroco.com](mailto:info@tobroco.com)

All technical data in this brochure refer to under Central European operating conditions tested series models and describe the standard functions. Specifications and their modes of operation, as well as accessories, depend on the model and the options of the product, as well as country-specific regulations in the country of sale. Images may show non-listed or non-standard available products. The descriptions, illustrations, weights and technical data are not binding and are in accordance with the state of the art at the time of going to press. Changes in the design, equipment, optics and technology are due to the continuous development of its products without prior notice. Do you need special functions which are only available through the use of additional components and / or under special circumstances, please contact us! We will be happy to answer your questions and let you know whether and under what conditions regarding the product and the environmental conditions special functions are realizable. When doubts about the capacity or the performance of our products under special circumstances, we recommend to perform under controlled conditions. Testing activities despite the utmost care, we can not rule out deviations from illustrations or dimensions, calculation errors, misprints or omissions in this brochure. We therefore accept no liability for the correctness and completeness of the information contained in this brochure. As part of our General Terms and Conditions, we guarantee the proper functioning of our products. Furthermore Linear guarantees we provide in principle. A further liability than outlined in our Terms and Conditions is excluded.